



# Community Advisory Committee

Regular Meeting

August 13<sup>th</sup>, 2021



# Regular Meeting Agenda

1. Welcome
2. Roll Call
3. Election of Chair, Vice Chair, and Secretary
4. Public Comment for Items Not on the Agenda
5. Items to be Withdrawn, or Reordered on the Agenda
6. Receive Presentation on the City of San Diego's Climate Equity Index
7. Discussion of Return to In-Person Meetings
5. Standing Item: Discussion of Potential Agenda Items for Board of Directors Meetings
6. Committee Member Announcements
7. Adjournment

# Item 3

## **Election of Chair, Vice Chair, and Secretary**

# Item 4

## **Public Comment for Items Not on the Agenda**

# Item 5

## **Items to be Withdrawn, or Reordered on the Agenda**

## Item 6

# **Receive Presentation on the City of San Diego's Climate Equity Index**

Sustainability Department

# City of San Diego Climate Equity Index

**Roberto Carlos Torres (He/Him/El)** • Climate Equity Specialist

San Diego Community Power • Friday, August 13, 2021





# Overview

- Equity and Equality
- Background and Objectives
- Methodology
- Closer look at Communities of Concern
- Implementing Climate Equity



# Equality and Equity

Equality



Equity



© 2017 Robert Wood Johnson Foundation.  
May be reproduced with attribution.

# Climate Equity

**Climate Equity:** *addressing historical inequities suffered by people of color, allowing everyone to fairly share the same benefits and burdens from climate solutions and attain full and equal access to opportunities regardless of one's background and identity.*

# Why is equity important?

- Disparities exist and effect the health and safety of our Communities of Concern.
- If not addressed, disparities continue, leaving hundreds of thousands of San Diegans vulnerable.
- Focusing on our most vulnerable helps every community thrive.



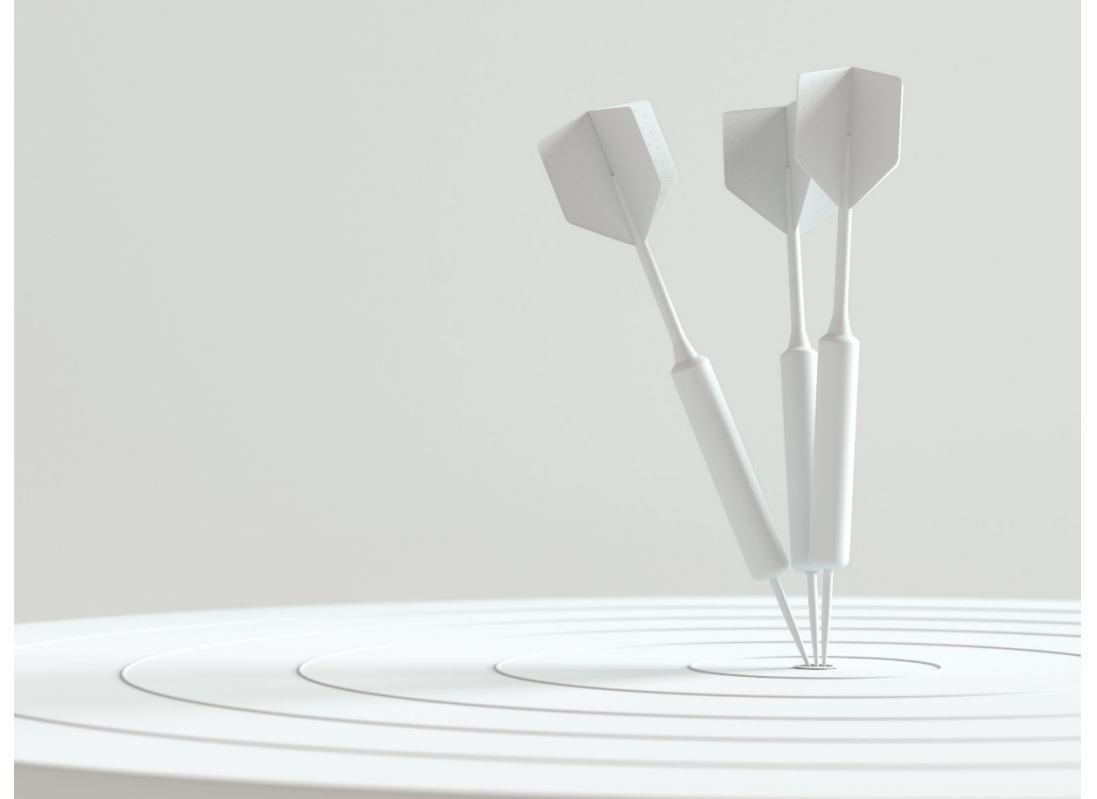
# How do we advance equity?

- Focus on community-driven engagement & empowerment
- Understand the historical inequities & barriers faced by Communities of Concern
- Prioritize resources to areas with the greatest need



# Objectives

- Addressing Social Equity and Environmental Justice
- Citywide Equity Assessment
- Community Driven





# Process

- Established the Equity Stakeholder Working Group
  - 23 organizations participated
- Worked with University of San Diego, Energy Policy Initiative Center (EPIC)
  - Developed methodology for scoring
- Gathered data, calculated relative scores, and produced a report with map to showcase results
- Revised CEI to incorporate further stakeholder input and align with CalEnviroScreen 3.0



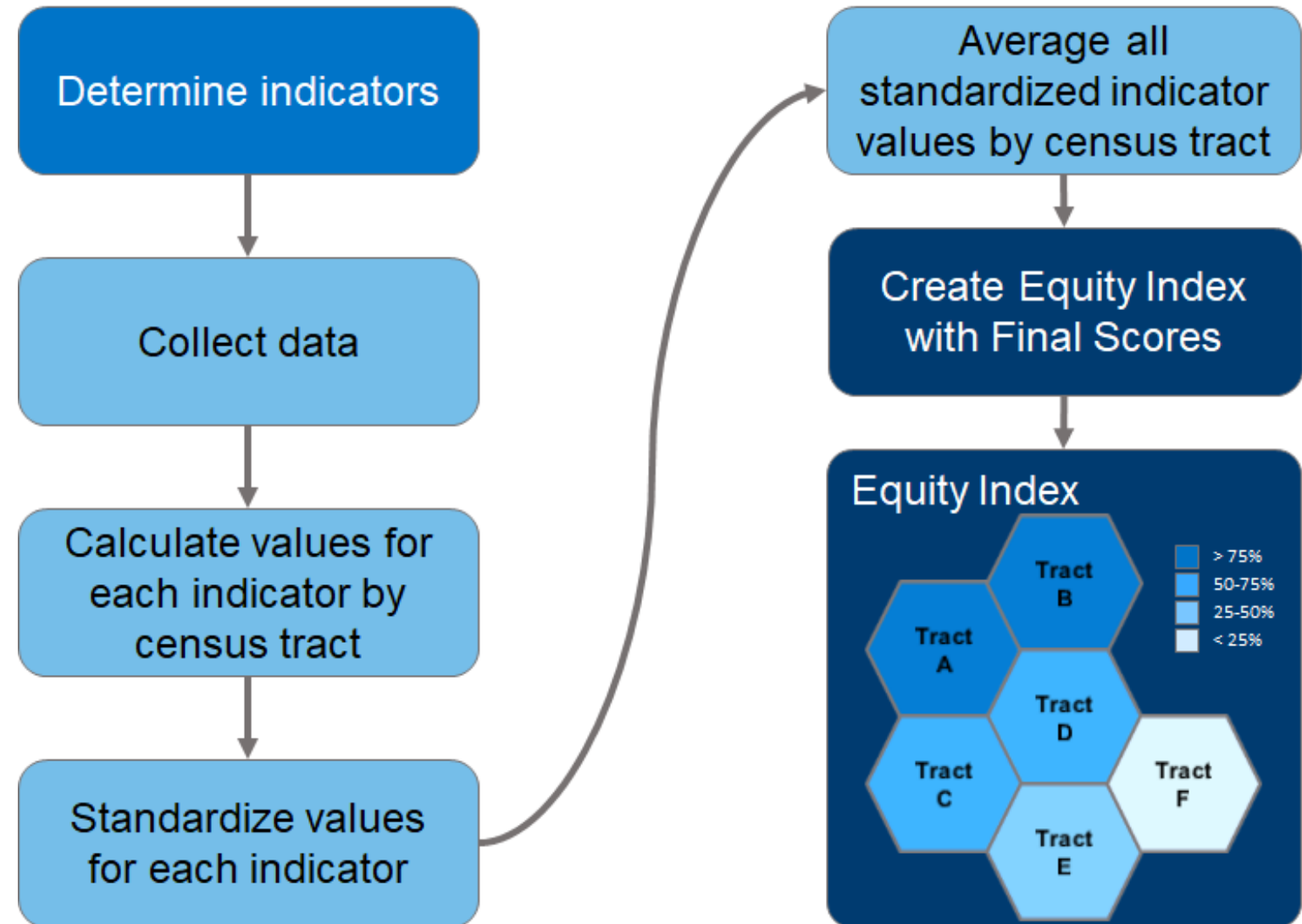


# Equity Stakeholder Working Group

- Alliance San Diego
- Bayside Community Center
- Business For Good
- Casa Familiar
- Center for Sustainable Energy
- Circulate San Diego
- City Heights CDC
- Climate Action Campaign
- Environmental Health Coalition
- GRID Alternatives
- Groundworks San Diego
- I Am My Brother's Keeper CDC
- Mid-City CAN
- Nile Sisters Development Initiative
- Partnership for the Advancement of New Americans (PANA)
- Project New Village
- RISE San Diego
- San Diego 350
- San Diego EDC
- San Diego Housing Federation
- The Greenlining Institute
- The San Diego Foundation
- Urban Collaborative Project



# Methodology



# Indicators



## Environmental

- Flood Risk
- Fire Risk
- Tree Coverage
- Urban Heat Island Index
- **Toxic Release from Facilities\***
- **Clean Up Sites\***
- **Hazardous Waste Generators and Facilities\***
- **Solid Waste Sites and Facilities\***
- **Ozone\***
- **PM2.5\***
- **Diesel PM\***
- Pesticide Use\*
- Drinking Water Contaminants\*
- Groundwater Threats\*
- Impaired Water Bodies\*
- Proximity to Community Recreation Areas



## Health

- Asthma Rates\*
- Cancer Fatalities
- Healthy Food Access
- Low Infant Birth Weights\*
- **Cardiovascular Disease\***



## Housing

- Housing Cost Burden
- Overcrowdedness



## Mobility

- Traffic Density\*
- Electric Vehicle Charging Infrastructure
- Pedestrian Access
- Commute Burden
- Transportation Cost Burden
- Disability
- Street Conditions
- Bikeability
- Access to Public Transit



## Socioeconomic

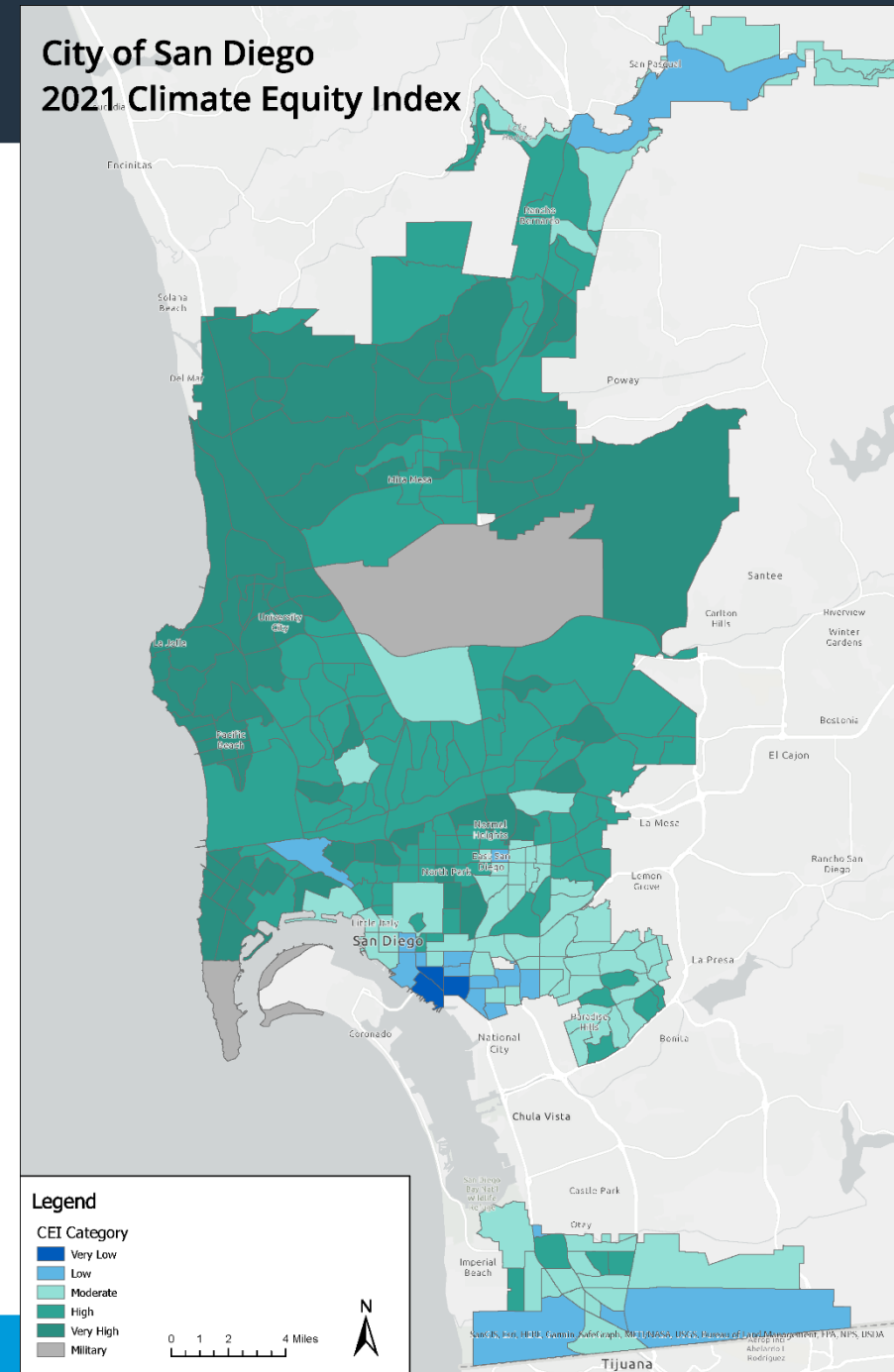
- Unemployment\*
- Educational Attainment\*
- Linguistic Isolation\*
- Digital Access
- Median Income
- Poverty Rate\*
- Change in Income
- Energy Cost Burden
- Solar Photovoltaic Systems

\* CalEnviroScreen 3.0 Indicators

# Climate Equity Index

- Five categories of access to opportunity:
  - 0-20, **Very Low Access**
  - 20-40, **Low Access**
  - 40-60, **Moderate Access**
  - 60-80, **High Access**
  - 80-100, **Very High Access**

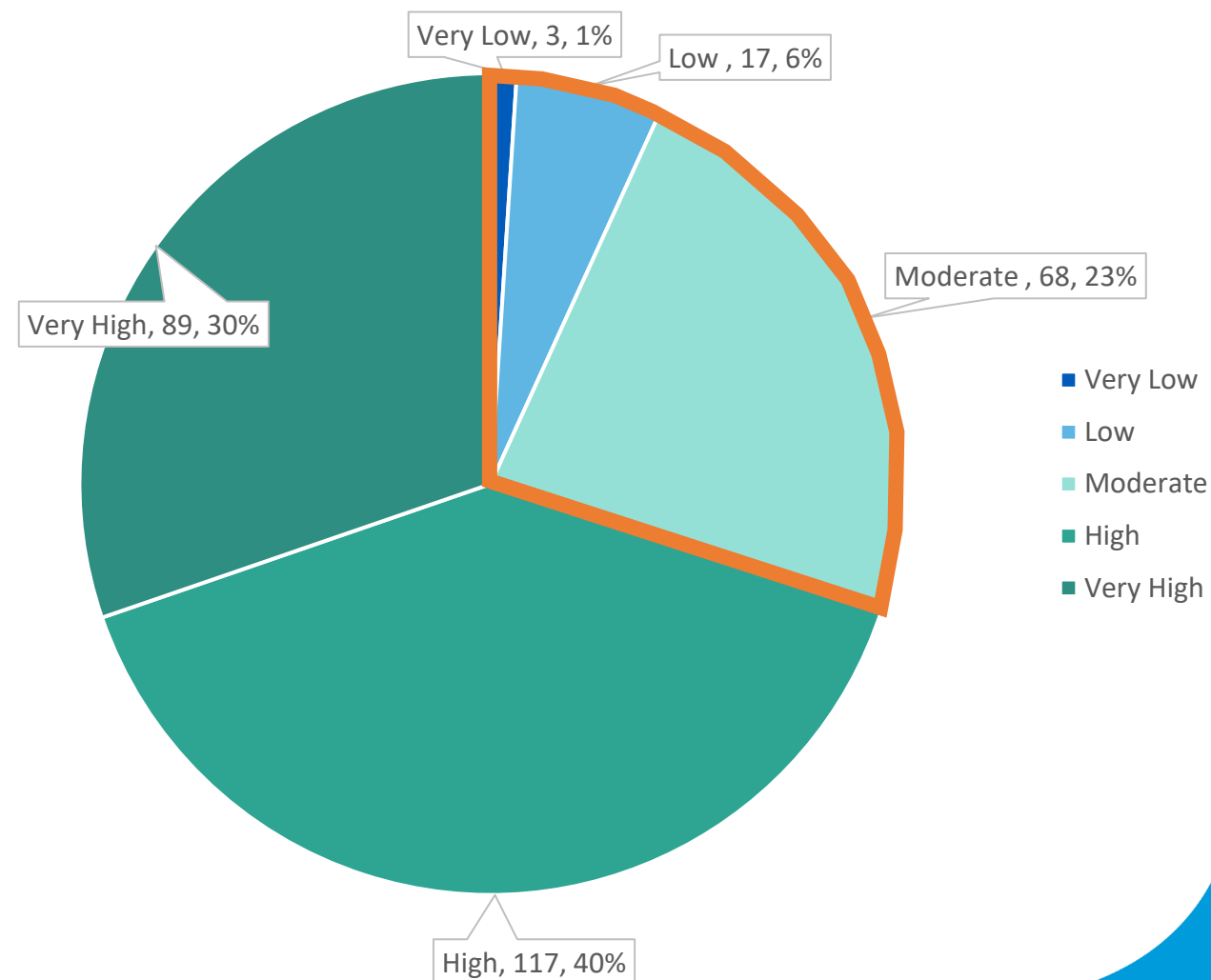
## City of San Diego 2021 Climate Equity Index



# 2021 CEI Results

- 206 tracts with **High** to **Very High** access to opportunity
- 88 tracts with **Very Low**, **Low**, and **Moderate** access to opportunity
  - **Communities of Concern**  
(~ 30% of population)

Census Tracts' Level of Access to Opportunity



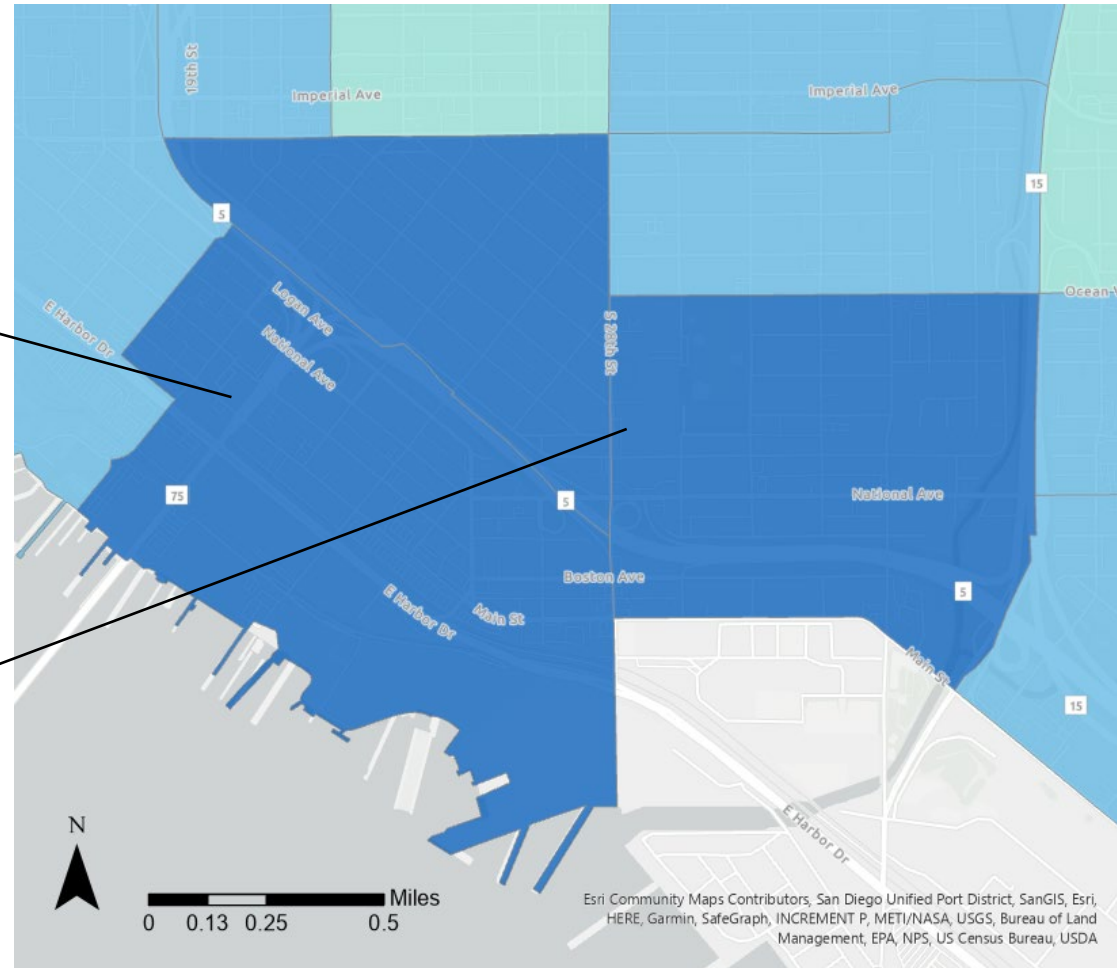
# Communities of Concern

*Tracts with **Very Low Access:***

*Barrio Logan (D8)*



*Logan Heights (D8)*



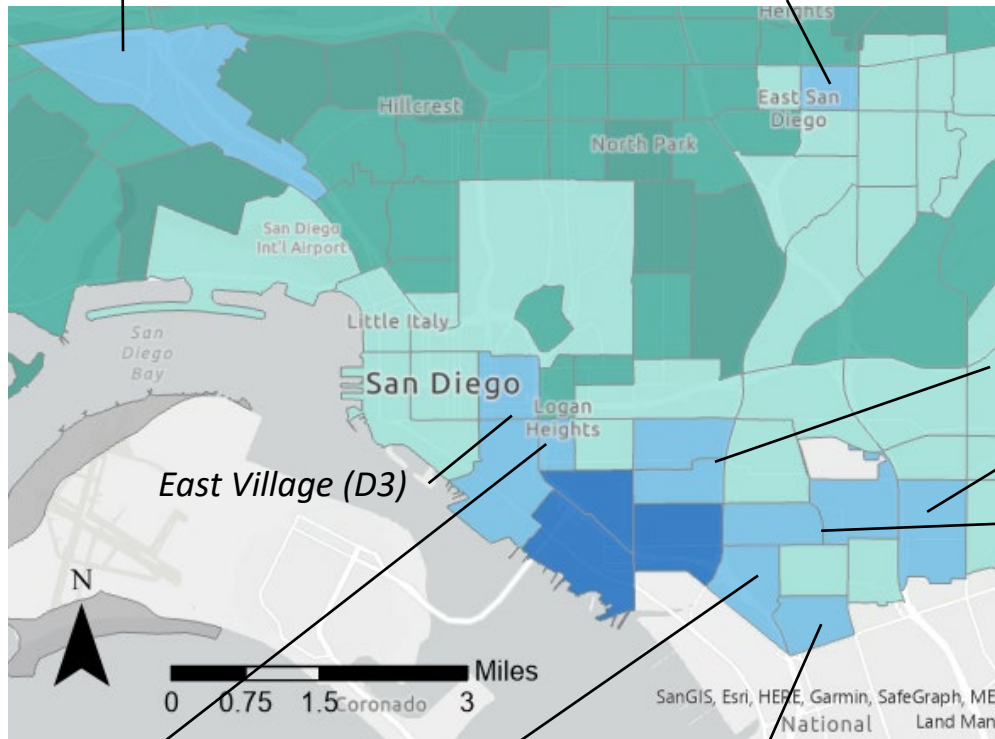


# Communities of Concern

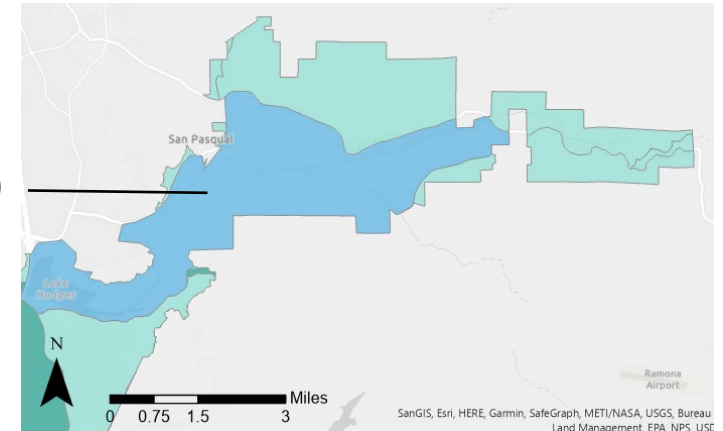
## Tracts with *Low Access*:

Midway District (D2)

City Heights – Teralta East (D9)



San Pasqual (D5)



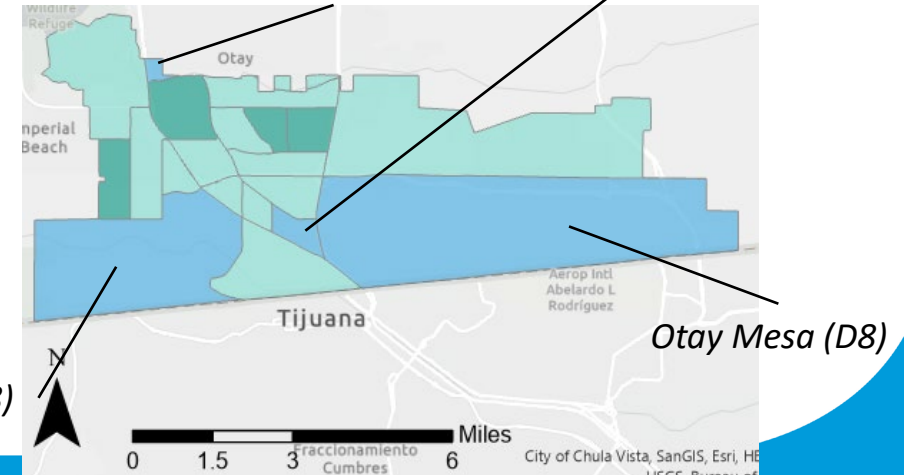
Grant Hill/Stockton (D8)

Lincoln Park (D4)

Mountain View (D9)

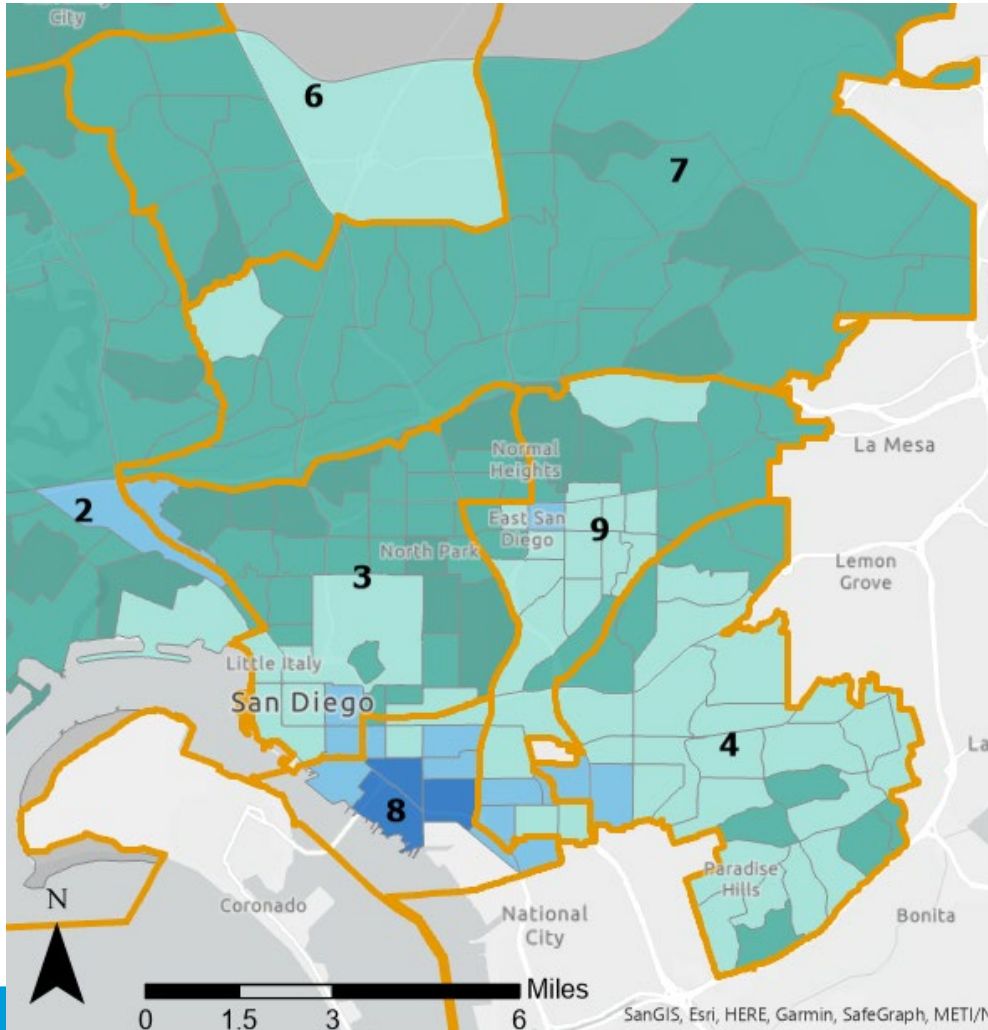
Palm City (D8)

San Ysidro (D8)

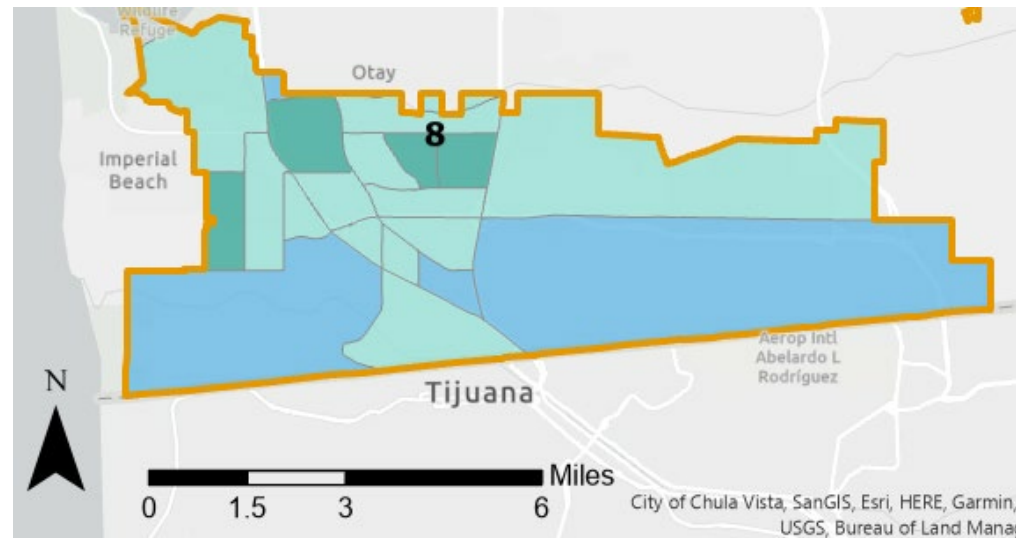
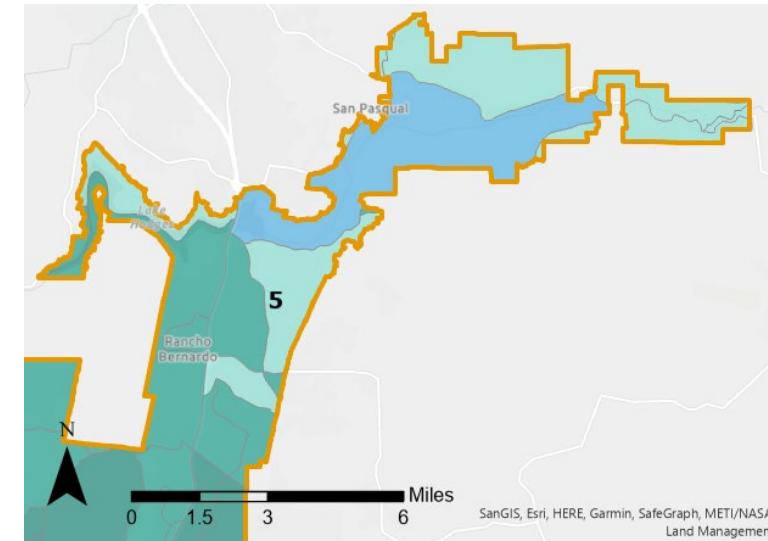


## Tracts with *Moderate Access*:

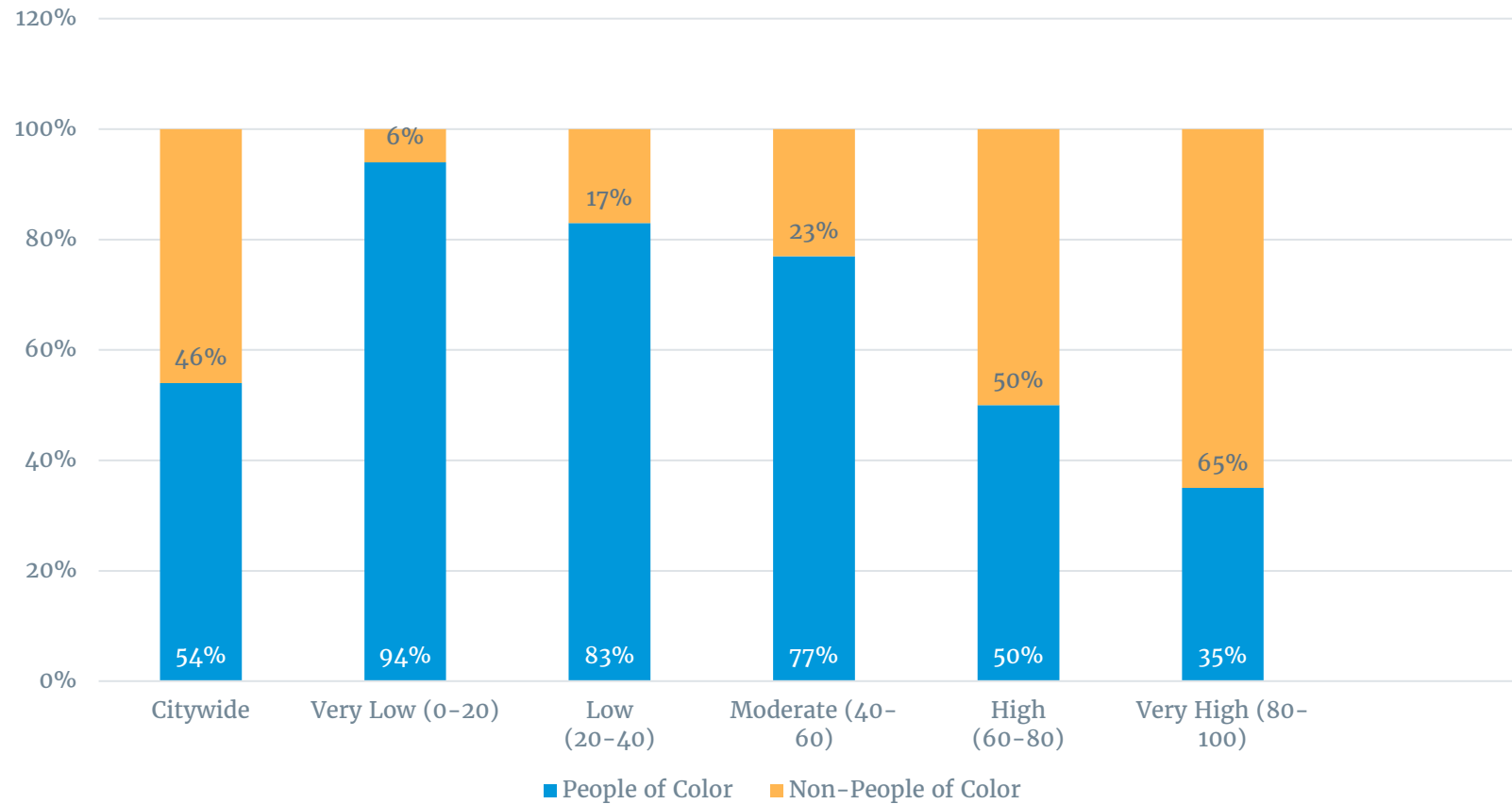
- Predominantly in Council Districts 4, 8, and 9



- Council District 2 – one census tract
- Council District 3 – six census tracts
- Council District 5 – five census tracts
- Council District 6 – one census tract
- Council District 7 – one census tract



A disproportionate percent of people of color are concentrated in certain census tracts



# Climate Equity Implementation

- ❑ Successfully secured Transformative Climate Communities (TCC) Planning Grant in partnership with Environmental Health Coalition (**Recommendation 1 – Prioritize and invest in Communities of Concern**)
- ❑ Climate Action Plan Update with focus on engagement in Communities of Concern (**Recommendation 2 – Partner with CBOs to engage residents in Communities of Concern**)
- ❑ Continue exploring feasibility of establishing Ambassador Program in the future (**Recommendation 3 – Explore feasibility of an ambassador program**)
- ❑ CEI incorporated into Complete Communities Initiative, Climate Equity Fund, and CIP Prioritization (**Recommendation 4 – Determine other mechanisms to integrate and utilize CEI**)
- ❑ Committed to refresh CEI when there are major data updates, like CalEnviroScreen or Census data.







# Thank you!

**Roberto Carlos Torres**  
Climate Equity Specialist  
[rctorres@sanidiego.gov](mailto:rctorres@sanidiego.gov)  
(619) 533-5974



# Item 7

## **Discussion of Return to In-Person Meetings**



# Item 8

## **Standing Item: Discussion of Potential Agenda Items for Board of Directors Meetings**

# **Regular Meeting Agenda**

**Committee Member  
Announcements**

**Adjournment**



# Community Advisory Committee

Next Regular Meeting  
September 10<sup>th</sup>, 2021

