



## SAN DIEGO COMMUNITY POWER

815 E Street, Suite 12716  
San Diego, CA 92112  
SDCommunityPower.org

### HELLO NEIGHBOR,

**San Diego Community Power (SDCP)** is a local provider of electricity that will serve your community by bringing you cleaner energy at competitive rates. We put our communities first, helping you take a giant step toward a more sustainable energy future.

We are a locally managed, not-for-profit, public agency that focuses on what families need and want most when it comes to their energy.

Beginning in **May 2022\***, San Diego Community Power will become your new electric generation service provider – meaning we will purchase renewable power, like solar and wind, and provide it to you at competitive rates.

### YOUR ENERGY. YOUR CHOICE.

When you are automatically enrolled into our service, you'll receive our standard service offering, **PowerOn**, which provides 50% renewable energy and is priced competitively to what you are currently paying with San Diego Gas & Electric (SDG&E).

If you want to further reduce your carbon footprint from energy consumption, you can choose to upgrade to **Power100**, providing 100% renewable and carbon free energy for a small premium of up to 3%. Power100 is one of the most effective tools to help you reduce your carbon footprint.

You can also choose to opt out and return to SDG&E service, but you'll be missing out on some important benefits.

With SDCP, you're empowered to choose a cleaner future.

### BENEFITS THAT YOU CAN EXPECT FROM SAN DIEGO COMMUNITY POWER:

- Cleaner, renewable power at competitive prices
- Energy programs tailored to meet the needs of our communities
- Local control by local representatives who prioritize people and our communities
- Reinvestment of revenues into our community
- Support of local job creation and development of local renewable energy projects

On behalf of everyone at SDCP, we are excited for you to join our community and allow us to serve you more renewable energy at competitive rates!

*Sincerely,*

***Your local team at San Diego Community Power***

#### How It Works



#### SDCP

Buys electricity from renewable resources

#### SDG&E

Delivers power and maintains the grid

#### YOU GET

Cleaner power, local control and competitive rates

To learn more about SDCP and our benefits, change your service level, or to opt out, visit: [www.SDCommunityPower.org](http://www.SDCommunityPower.org) or call 1-888-382-0169

Para obtener más información sobre SDCP y nuestros beneficios, cambiar su nivel de servicio o optar por no participar, visite: [www.SDCommunityPower.org](http://www.SDCommunityPower.org) o llame al 1-888-382-0169.

Upang matuto nang higit pa tungkol sa SDCP at sa aming mga benepisyo, baguhin ang antas ng iyong serbisyo, o mag-opt out, bisitahin ang: [www.SDCommunityPower.org](http://www.SDCommunityPower.org) o tumawag sa 1-888-382-0169.

*\*Please note that rooftop solar customers and other customers participating in Net Energy Metering (NEM) will be automatically enrolled at the end of their relevant period (commonly referred to as “true-up”). For more information on enrollment, please see the FAQs on our website at: [SDCommunityPower.org](http://SDCommunityPower.org).*

### **TERMS & CONDITIONS OF SERVICE**

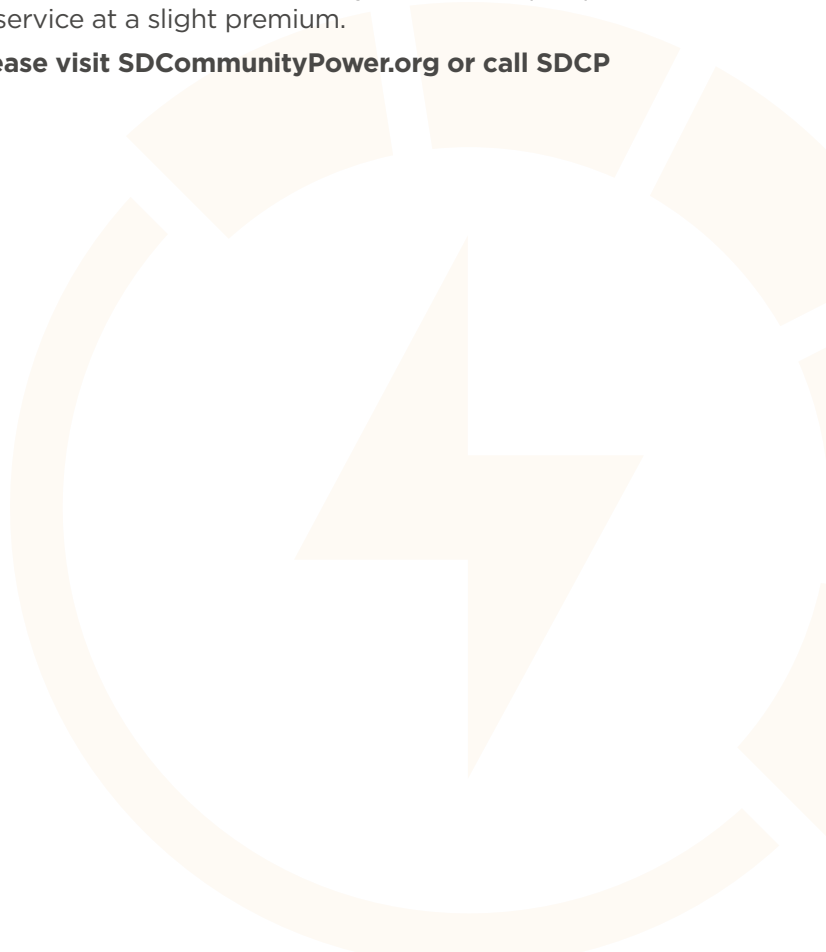
San Diego Community Power electric generation rates are managed with the intention of providing cleaner electricity at competitive rates. Any changes to SDCP rates will be adopted at duly noticed public hearings of the San Diego Community Power Board of Directors. Changes to SDG&E or SDCP rates will impact cost comparisons between SDCP and SDG&E.

All SDG&E and SDCP customers pay a monthly Power Charge Indifference Adjustment (PCIA) and Franchise Fee Surcharge. SDCP has already accounted for these after-market charges in calculating rates. View SDCP rates and SDG&E cost comparisons on our website.

**BILLING:** You will receive a single monthly bill from SDG&E that includes SDCP’s electric generation charges. SDCP’s electric generation charge replaces SDG&E’s electric generation charge. SDCP’s charge is not a duplicate charge or extra fee. SDG&E will continue to charge you for electric delivery services. If you opt-out of SDCP, SDG&E will resume charging you for electric generation.

**ENROLLMENT:** **As the default electricity provider for the cities of Chula Vista, Encinitas, Imperial Beach, La Mesa, and San Diego, you will be automatically enrolled into San Diego Community Power service unless you opt-out at least five business days before your meter read date during the enrollment month.** Accounts will be automatically enrolled in SDCP’s PowerOn on your regularly scheduled meter read on or after the first day of the enrollment month. You may choose to opt-up to Power100, which provides 100% renewable energy service at a slight premium.

**For complete Terms and Conditions of Service, please visit [SDCommunityPower.org](http://SDCommunityPower.org) or call SDCP at 1-888-382-0169.**





## SAN DIEGO COMMUNITY POWER

815 E Street, Suite 12716  
San Diego, CA 92112  
SDCommunityPower.org

### HELLO NEIGHBOR,

**San Diego Community Power (SDCP)** is a local provider of electricity that will serve your community by bringing you cleaner energy at competitive rates. We put our communities first, helping you take a giant step toward a more sustainable energy future. We are a locally managed, not-for-profit, public agency that focuses on what families need and want most when it comes to their energy.

Beginning in **April 2022\***, San Diego Community Power will become your new electric generation service provider – meaning we will purchase renewable power, like solar and wind, and provide it to you at competitive rates.

### YOUR ENERGY. YOUR CHOICE.

In order to reduce Encinitas' carbon footprint from energy consumption, your City Council voted to automatically enroll everyone into **Power100**, providing 100% renewable and carbon free energy for a small premium of up to 3%. Power100 is one of the most effective tools to help you reduce your carbon footprint.

You can choose to opt down and enroll in our standard service, **PowerOn**, which provides 50% renewable energy at competitive rates.

You can also choose to opt out and return to SDG&E service, but you'll be missing out on some important benefits.

With SDCP, you're empowered to choose a cleaner future..

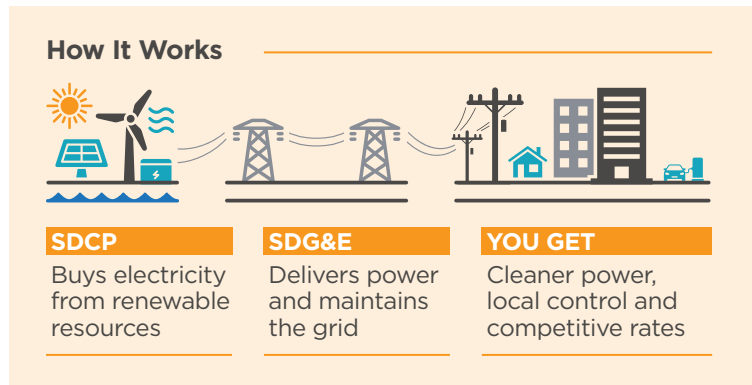
### BENEFITS THAT YOU CAN EXPECT FROM SAN DIEGO COMMUNITY POWER:

- Cleaner, renewable power at competitive prices
- Energy programs tailored to meet the needs of our communities
- Local control by local representatives who prioritize people and our communities
- Reinvestment of revenues into our community
- Support of local job creation and development of local renewable energy projects

On behalf of everyone at SDCP, we are excited for you to join our community and allow us to serve you more renewable energy at competitive rates!

*Sincerely,*

**Your local team at San Diego Community Power**



To learn more about SDCP and our benefits, change your service level, or to opt out, visit: [www.SDCommunityPower.org](http://www.SDCommunityPower.org) or call 1-888-382-0169

Para obtener más información sobre SDCP y nuestros beneficios, cambiar su nivel de servicio o optar por no participar, visite: [www.SDCommunityPower.org](http://www.SDCommunityPower.org) o llame al 1-888-382-0169.

Upang matuto nang higit pa tungkol sa SDCP at sa aming mga benepisyo, baguhin ang antas ng iyong serbisyo, o mag-opt out, bisitahin ang: [www.SDCommunityPower.org](http://www.SDCommunityPower.org) o tumawag sa 1-888-382-0169.

*\*Please note that rooftop solar customers and other customers participating in Net Energy Metering (NEM) will be automatically enrolled at the end of their relevant period (commonly referred to as “true-up”). For more information on enrollment, please see the FAQs on our website at: [SDCommunityPower.org](http://SDCommunityPower.org).*

### **TERMS & CONDITIONS OF SERVICE**

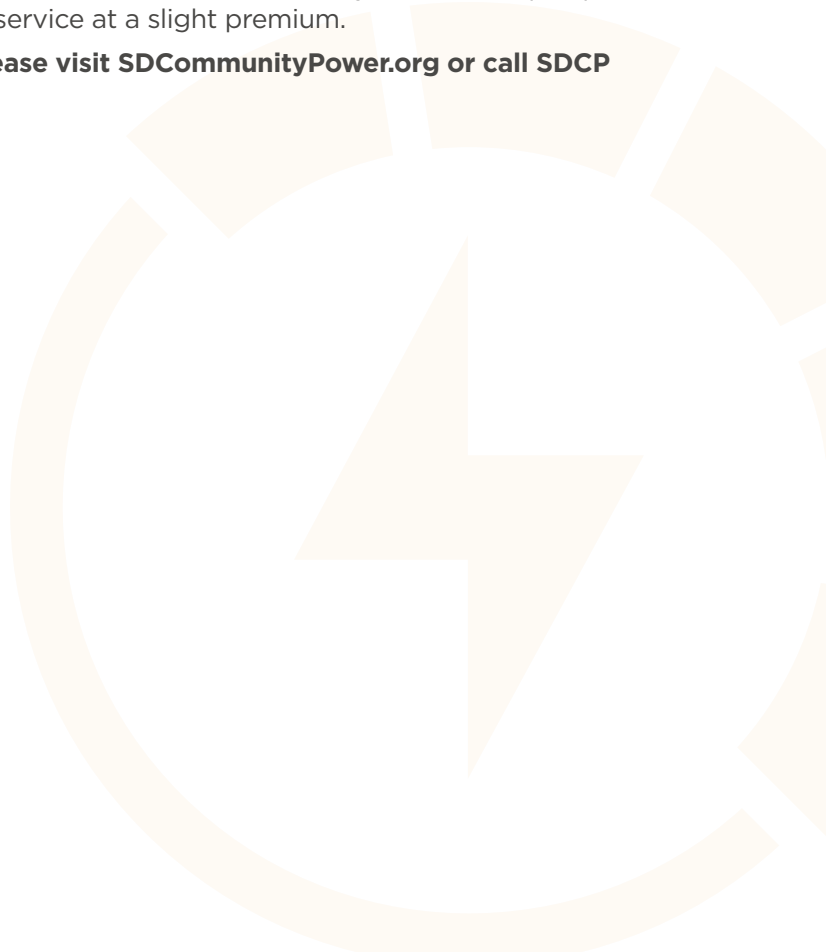
San Diego Community Power electric generation rates are managed with the intention of providing cleaner electricity at competitive rates. Any changes to SDCP rates will be adopted at duly noticed public hearings of the San Diego Community Power Board of Directors. Changes to SDG&E or SDCP rates will impact cost comparisons between SDCP and SDG&E.

All SDG&E and SDCP customers pay a monthly Power Charge Indifference Adjustment (PCIA) and Franchise Fee Surcharge. SDCP has already accounted for these after-market charges in calculating rates. View SDCP rates and SDG&E cost comparisons on our website.

**BILLING:** You will receive a single monthly bill from SDG&E that includes SDCP’s electric generation charges. SDCP’s electric generation charge replaces SDG&E’s electric generation charge. SDCP’s charge is not a duplicate charge or extra fee. SDG&E will continue to charge you for electric delivery services. If you opt-out of SDCP, SDG&E will resume charging you for electric generation.

**ENROLLMENT: As the default electricity provider for the cities of Chula Vista, Encinitas, Imperial Beach, La Mesa, and San Diego, you will be automatically enrolled into San Diego Community Power service unless you opt-out at least five business days before your meter read date during the enrollment month.** Accounts will be automatically enrolled in SDCP’s PowerOn on your regularly scheduled meter read on or after the first day of the enrollment month. You may choose to opt-up to Power100, which provides 100% renewable energy service at a slight premium.

**For complete Terms and Conditions of Service, please visit [SDCommunityPower.org](http://SDCommunityPower.org) or call SDCP at 1-888-382-0169.**





SAN DIEGO  
**COMMUNITY  
POWER**

## SAN DIEGO COMMUNITY POWER

815 E Street, Suite 12716  
San Diego, CA 92112  
SDCommunityPower.org

### HELLO NEIGHBOR,

**San Diego Community Power (SDCP)** is a local provider of electricity that will serve your community by bringing you cleaner energy at competitive rates. We put our communities first, helping you take a giant step toward a more sustainable energy future. We are a locally managed, not-for-profit, public agency that focuses on what families need and want most when it comes to their energy.

Following the completion of your Net Energy Metering (NEM) relevant period (commonly referred to as a “true-up”) in **May 2022\***, San Diego Community Power will become your new electric generation service provider – meaning we will purchase renewable power, like solar and wind, and provide it to you at competitive rates.

### YOUR ENERGY. YOUR CHOICE.

When you are automatically enrolled into our service, you’ll receive our standard service offering, **PowerOn**, which provides 50% renewable energy and is priced competitively to what you are currently paying with San Diego Gas & Electric (SDG&E).

If you want to further reduce your carbon footprint from energy consumption, you can choose to upgrade to **Power100**, providing 100% renewable and carbon free energy for a small premium of up to 3%. Power100 is one of the most effective tools to help you reduce your carbon footprint.

You can also choose to opt out and return to SDG&E service, but you’ll be missing out on some important benefits.

With SDCP, you’re empowered to choose a cleaner future.

### BENEFITS THAT YOU CAN EXPECT FROM SAN DIEGO COMMUNITY POWER:

- Cleaner, renewable power at competitive prices
- Energy programs tailored to meet the needs of our communities
- Local control by local representatives who prioritize people and our communities
- Reinvestment of revenues into our community
- Support of local job creation and development of local renewable energy projects

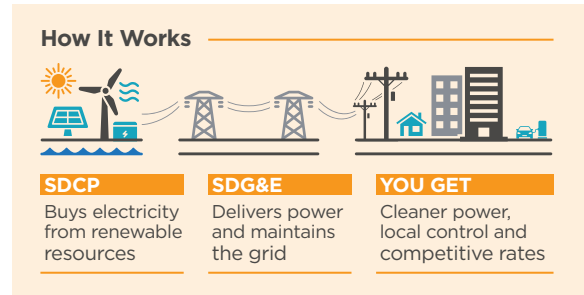
As a customer with onsite generation, you will be automatically enrolled into our Net Energy Metering (NEM) program that functions almost identically to that of SDG&E’s but with a few key differences that makes our program better!

- Same rate schedules and accrual of credits
- Monthly billing to reduce a large annual true-up bill
- Premium Net Surplus Compensation for customers that generate extra electricity every year;
- Automatic checks to customers that have a compensation amount over \$100, up to \$2,500.
- Carry over of compensation credits if less than \$100.

On behalf of everyone at SDCP, we are excited for you to join our community and allow us to serve you more renewable energy at competitive rates!

*Sincerely,*

**Your local team at San Diego Community Power**



To learn more about SDCP and our benefits, change your service level, or to opt out, visit: [www.SDCommunityPower.org](http://www.SDCommunityPower.org) or call 1-888-382-0169

Para obtener más información sobre SDCP y nuestros beneficios, cambiar su nivel de servicio o optar por no participar, visite: [www.SDCommunityPower.org](http://www.SDCommunityPower.org) o llame al 1-888-382-0169.

Upang matuto nang higit pa tungkol sa SDCP at sa aming mga benepisyo, baguhin ang antas ng iyong serbisyo, o mag-opt out, bisitahin ang: [www.SDCommunityPower.org](http://www.SDCommunityPower.org) o tumawag sa 1-888-382-0169.

*\*Note: Only Net Energy Metering (NEM) accounts with a May true-up date will begin enrollment in May 2022. Other NEM accounts will enroll at their true-up date.*

*Non-NEM residential accounts will begin enrollment starting in February 2022 through May 2022. For more information on enrollment, please see the FAQs on our website at: [SDCommunityPower.org](https://SDCommunityPower.org).*

### **TERMS & CONDITIONS OF SERVICE**

San Diego Community Power electric generation rates are managed with the intention of providing cleaner electricity at competitive rates. Any changes to SDCP rates will be adopted at duly noticed public hearings of the San Diego Community Power Board of Directors. Changes to SDG&E or SDCP rates will impact cost comparisons between SDCP and SDG&E.

All SDG&E and SDCP customers pay a monthly Power Charge Indifference Adjustment (PCIA) and Franchise Fee Surcharge. SDCP has already accounted for these after-market charges in calculating rates. View SDCP rates and SDG&E cost comparisons on our website.

**BILLING:** You will receive a single monthly bill from SDG&E that includes SDCP's electric generation charges. SDCP's electric generation charge replaces SDG&E's electric generation charge. SDCP's charge is not a duplicate charge or extra fee. SDG&E will continue to charge you for electric delivery services. If you opt-out of SDCP, SDG&E will resume charging you for electric generation.

**ENROLLMENT:** **As the default electricity provider for the cities of Chula Vista, Encinitas, Imperial Beach, La Mesa, and San Diego, you will be automatically enrolled into San Diego Community Power service unless you opt-out at least five business days before your meter read date during the enrollment month.** Accounts will be automatically enrolled in SDCP's PowerOn on your regularly scheduled meter read on or after the first day of the enrollment month. You may choose to opt-up to Power100, which provides 100% renewable energy service at a slight premium.

**For complete Terms and Conditions of Service, please visit [SDCommunityPower.org](https://SDCommunityPower.org) or call SDCP at 1-888-382-0169.**



## SAN DIEGO COMMUNITY POWER

815 E Street, Suite 12716  
San Diego, CA 92112  
SDCommunityPower.org

### HELLO NEIGHBOR,

**San Diego Community Power (SDCP)** is a local provider of electricity that will serve your community by bringing you cleaner energy at competitive rates. We put our communities first, helping you take a giant step toward a more sustainable energy future. We are a locally managed, not-for-profit, public agency that focuses on what families need and want most when it comes to their energy.

Following the completion of your Net Energy Metering (NEM) relevant period (commonly referred to as a “true-up”) in **May 2022\***, San Diego Community Power will become your new electric generation service provider – meaning we will purchase renewable power, like solar and wind, and provide it to you at competitive rates.

### YOUR ENERGY. YOUR CHOICE.

In order to reduce Encinitas’ carbon footprint from energy consumption, your City Council voted to automatically enroll everyone into **Power100**, providing 100% renewable and carbon free energy for a small premium of up to 3%. Power100 is one of the most effective tools to help you reduce your carbon footprint.

You can choose to opt down and enroll in our standard service, **PowerOn**, which provides 50% renewable energy at competitive rates.

You can also choose to opt out and return to SDG&E service, but you’ll be missing out on some important benefits.

With SDCP, you’re empowered to choose a cleaner future.

### BENEFITS THAT YOU CAN EXPECT FROM SAN DIEGO COMMUNITY POWER:

- Cleaner, renewable power at competitive prices
- Energy programs tailored to meet the needs of our communities
- Local control by local representatives who prioritize people and our communities
- Reinvestment of revenues into our community
- Support of local job creation and development of local renewable energy projects

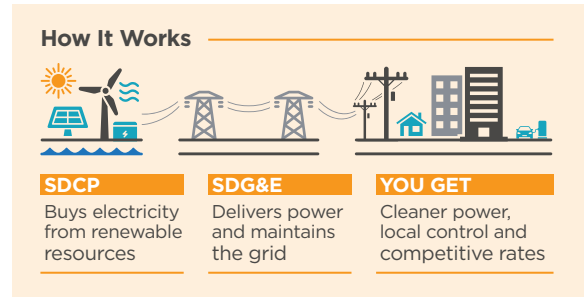
As a customer with onsite generation, you will be automatically enrolled into our Net Energy Metering (NEM) program that functions almost identically to that of SDG&E’s but with a few key differences that makes our program better!

- Same rate schedules and accrual of credits
- Monthly billing to reduce a large annual true-up bill
- Premium Net Surplus Compensation for customers that generate extra electricity every year;
- Automatic checks to customers that have a compensation amount over \$100, up to \$2,500.
- Carry over of compensation credits if less than \$100.

On behalf of everyone at SDCP, we are excited for you to join our community and allow us to serve you more renewable energy at competitive rates!

*Sincerely,*

**Your local team at San Diego Community Power**



To learn more about SDCP and our benefits, change your service level, or to opt out, visit: [www.SDCommunityPower.org](http://www.SDCommunityPower.org) or call 1-888-382-0169

Para obtener más información sobre SDCP y nuestros beneficios, cambiar su nivel de servicio o optar por no participar, visite: [www.SDCommunityPower.org](http://www.SDCommunityPower.org) o llame al 1-888-382-0169.

Upang matuto nang higit pa tungkol sa SDCP at sa aming mga benepisyo, baguhin ang antas ng iyong serbisyo, o mag-opt out, bisitahin ang: [www.SDCommunityPower.org](http://www.SDCommunityPower.org) o tumawag sa 1-888-382-0169.



*\*Note: Only Net Energy Metering (NEM) accounts with a May true-up date will begin enrollment in May 2022. Other NEM accounts will enroll at their true-up date.*

*Non-NEM residential accounts in Encinitas will begin enrollment starting in April 2022. For more information on enrollment, please see the FAQs on our website at: [SDCommunityPower.org](http://SDCommunityPower.org).*

### **TERMS & CONDITIONS OF SERVICE**

San Diego Community Power electric generation rates are managed with the intention of providing cleaner electricity at competitive rates. Any changes to SDCP rates will be adopted at duly noticed public hearings of the San Diego Community Power Board of Directors. Changes to SDG&E or SDCP rates will impact cost comparisons between SDCP and SDG&E.

All SDG&E and SDCP customers pay a monthly Power Charge Indifference Adjustment (PCIA) and Franchise Fee Surcharge. SDCP has already accounted for these after-market charges in calculating rates. View SDCP rates and SDG&E cost comparisons on our website.

**BILLING:** You will receive a single monthly bill from SDG&E that includes SDCP's electric generation charges. SDCP's electric generation charge replaces SDG&E's electric generation charge. SDCP's charge is not a duplicate charge or extra fee. SDG&E will continue to charge you for electric delivery services. If you opt-out of SDCP, SDG&E will resume charging you for electric generation.

**ENROLLMENT:** **As the default electricity provider for the cities of Chula Vista, Encinitas, Imperial Beach, La Mesa, and San Diego, you will be automatically enrolled into San Diego Community Power service unless you opt out at least five business days before your meter read date during the enrollment month.** Customers in Encinitas will be automatically enrolled in SDCP's Power100 on your regularly scheduled meter read on or after the first day of the enrollment month. You may choose to opt-down to PowerOn, which provides 50% renewable energy service at a competitive rate.

**For complete Terms and Conditions of Service, please visit [SDCommunityPower.org](http://SDCommunityPower.org) or call SDCP at 1-888-382-0169.**

