



Say hello to a cleaner power provider who reinvests in our community.

Coming Spring 2023

San Diego Community Power (SDCP) is a local electricity provider that will serve your community by bringing you cleaner energy.

Visit us at SDCommunityPower.org

*Pre-sorted
Stamp*

SDCP Customer
101 Main Street
San Diego, CA 92101



San Diego Community Power (SDCP) is a local electricity provider that will serve your community by bringing you cleaner energy at competitive rates. We put our communities first, helping you take a giant step toward a more sustainable energy future while prioritizing equity and supporting local, good-paying jobs.

We are a locally managed, not-for-profit, public agency that focuses on what families need and want most when it comes to their energy. SDCP reinvests in the communities we serve to benefit residents and businesses in our region.

How It Works



SDCP

Buys electricity from renewable resources

SDG&E

Delivers power and maintains the grid

YOU GET

Cleaner power, local control, and competitive rates

Beginning in **April 2023**, San Diego Community Power will become your new electric generation service provider - meaning we will purchase renewable power, like solar and wind, and provide it to you at competitive rates. You will be automatically enrolled into our service unless you opt out. When you are automatically enrolled into our service, you'll receive our standard service offering, PowerOn, which provides 50% renewable energy and is priced competitively to what you are currently paying with San Diego Gas & Electric (SDG&E). You can always choose to return to SDG&E service, but you'll be missing out on some important benefits. With SDCP, you're empowered to choose a cleaner future.

[SDCommunityPower.org](https://www.SDCommunityPower.org)

Benefits that you can expect from San Diego Community Power:

- Competitively priced, cleaner, renewable power
- Energy programs tailored to meet the needs of San Diegans
- Local control by local representatives who prioritize people and our communities
- Reinvestment of revenues into the communities we serve
- Support of local job creation and development of local renewable energy projects

To learn more about SDCP and our benefits, change your service level, or to opt out, visit: www.SDCommunityPower.org or call 1-888-382-0169.

Para obtener más información sobre SDCP y nuestros beneficios, cambiar su nivel de servicio o optar por no participar, visite: www.SDCommunityPower.org o llame al 1-888-382-0169.

Upang matuto nang higit pa tungkol sa SDCP at sa aming mga benepisyo, baguhin ang antas ng iyong serbisyo, o mag-opt out, bisitahin ang: www.SDCommunityPower.org o tumawag sa 1-888-382-0169.

Terms & Conditions of Service

San Diego Community Power electric generation rates are managed with the intention of providing cleaner electricity at competitive rates. Any changes to SDCP rates will be adopted at duly noticed public hearings of the San Diego Community Power Board of Directors. Changes to SDG&E or SDCP rates will impact cost comparisons between SDCP and SDG&E.

All SDG&E and SDCP customers pay a monthly Power Charge Indifference Adjustment (PCIA) and Franchise Fee Surcharge. SDCP has already accounted for these after-market charges in calculating rates. View SDCP rates and SDG&E cost comparisons on our website.

ENROLLMENT: SDCP is the default electricity service provider for the cities of Chula Vista, Encinitas, Imperial Beach, La Mesa, National City, San Diego, and the Unincorporated County of San Diego. You will be automatically enrolled in SDCP services unless you opt out at least five business days before your meter read date during the enrollment month. Accounts will be automatically enrolled in SDCP's PowerOn on your regularly scheduled meter read on or after the first day of the enrollment month. You may choose to opt up to Power100, which provides 100% renewable energy service at a slight premium.

BILLING: You will receive a single monthly bill from SDG&E that includes SDCP's electric generation charges. SDCP's electric generation charge replaces SDG&E's electric generation charge. SDCP's charge is not a duplicate charge or extra fee. SDG&E will continue to charge you for electric delivery services. If you opt out of SDCP, SDG&E will resume charging you for electric generation.

For complete Terms and Conditions of Service, please visit [SDCommunityPower.org](https://www.SDCommunityPower.org) or call SDCP at 1-888-382-0169.

Please note that rooftop solar customers and other customers participating in Net Energy Metering (NEM) will be automatically enrolled at the end of their relevant period (commonly referred to as "true-up"). For more information on enrollment, please see the FAQs on our website at [SDCommunityPower.org](https://www.SDCommunityPower.org).



**Say hello to a cleaner
power provider
who reinvests in our
community.**

Coming Soon

San Diego Community Power (SDCP) is a local electricity provider that will serve your community by bringing you cleaner energy.

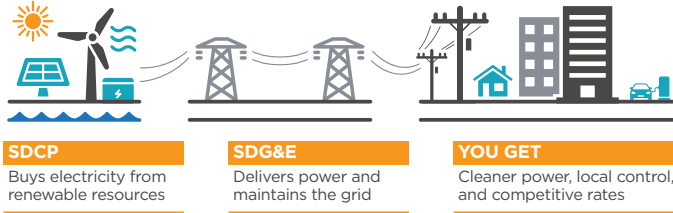
Visit us at SDCommunityPower.org

*Pre-sorted
Stamp*

SDCP Customer
101 Main Street
San Diego, CA 92101



How It Works



Following the completion of your relevant period (commonly referred to as your “annual true up”), San Diego Community Power will become your new electric generation service provider – meaning we will purchase renewable power, like solar and wind, and provide it to you at competitive rates when you pull more from the grid than you generate. You will be automatically enrolled into our service unless you opt out. When you are automatically enrolled into our service, you’ll receive our standard service offering, **PowerOn**, which provides 50% renewable energy and is priced competitively to what you are currently paying with San Diego Gas & Electric (SDG&E). You can always choose to return to SDG&E service, but you’ll be missing out on some important benefits. With SDGP, you’re empowered to choose a cleaner future.

Note: All NEM accounts will enroll at their annual true up date. Accounts without solar will begin enrollment in April 2023. For more information on enrollment, please see the FAQs on our website at SDCommunityPower.org.

Terms & Conditions of Service

San Diego Community Power electric generation rates are managed with the intention of providing cleaner electricity at competitive rates. Any changes to SDGP rates will be adopted at duly noticed public hearings of the San Diego Community Power Board of Directors. Changes to SDG&E or SDGP rates will impact cost comparisons between SDGP and SDG&E.

All SDG&E and SDGP customers pay a monthly Power Charge Indifference Adjustment (PCIA) and Franchise Fee Surcharge. SDGP has already accounted for these after-market charges in calculating rates. View SDGP rates and SDG&E cost comparisons on our website.

ENROLLMENT: SDGP is the default electricity service provider for the cities of Chula Vista, Encinitas, Imperial Beach, La Mesa, National City, San Diego, and the Unincorporated County of San Diego. You will be automatically enrolled in SDGP services unless you opt out at least five business days before your meter read date during the enrollment month. Accounts will be automatically enrolled in SDGP’s PowerOn on your regularly scheduled meter read on or after the first day of the enrollment month. You may choose to opt up to Power100, which provides 100% renewable energy service at a slight premium.

BILLING: You will receive a single monthly bill from SDG&E that includes SDGP’s electric generation charges. SDGP’s electric generation charge replaces SDG&E’s electric generation charge. SDGP’s charge is not a duplicate charge or extra fee. SDG&E will continue to charge you for electric delivery services. If you opt out of SDGP, SDG&E will resume charging you for electric generation.

For complete Terms and Conditions of Service, please visit SDCommunityPower.org or call SDGP at 1-888-382-0169.

Benefits that you can expect from San Diego Community Power:

- Competitively priced, cleaner, renewable power
- Energy programs tailored to meet the needs of San Diegans
- Local control by local representatives who prioritize people and our communities
- Reinvestment of revenues into the communities we serve
- Support of local job creation and development of local renewable energy projects

As a customer with onsite generation, you will be automatically enrolled into our Net Energy Metering (NEM) program that functions almost identically to that of SDG&E’s but with a few key differences that make our program better!

- Same rate schedules and accrual of credits
- Monthly billing to reduce a large annual true-up bill, with an option to remain on an annual billing schedule if you prefer
- Premium Net Surplus Compensation for customers that generate extra electricity every year
- Automatic checks to customers that have a compensation amount over \$100, up to \$2,500
- Carry over of compensation credits if less than \$100

To learn more about SDGP and our benefits, change your service level, or to opt out, visit: www.SDCommunityPower.org or call 1-888-382-0169.

Para obtener más información sobre SDGP y nuestros beneficios, cambiar su nivel de servicio o optar por no participar, visite: www.SDCommunityPower.org o llame al 1-888-382-0169.

Upang matuto nang higit pa tungkol sa SDGP at sa aming mga benepisyo, baguhin ang antas ng iyong serbisyo, o mag-opt out, bisitahin ang: www.SDCommunityPower.org o tumawag sa 1-888-382-0169.