

HELLO NEIGHBOR,

San Diego Community Power (SDCP) is a local provider of electricity that will serve your community by bringing you cleaner energy at competitive rates. We put our communities first, helping you take a giant step toward a more sustainable energy future.

We are a locally managed, not-for-profit, public agency that focuses on what families need and want most when it comes to their energy.

Beginning in **April 2023***, San Diego Community Power will become your new electric generation service provider – meaning we will purchase renewable power, like solar and wind, and provide it to you at competitive rates.

YOUR ENERGY. YOUR CHOICE.

When you are automatically enrolled into our service, you'll receive our standard service offering, **PowerOn**, which provides at least 50% renewable energy and is priced competitively to what you are currently paying with San Diego Gas & Electric (SDG&E).

If you want to further reduce your carbon footprint from energy consumption, you can choose to upgrade to **Power100**, which provides 100% renewable energy for a small premium.

You will continue to get your bill from SDG&E, but now you can choose who provides your electricity. You'll be automatically enrolled in our service unless you choose to opt out and return to SDG&E service, but you'll be missing out on some important benefits. With SDCP, you're empowered to choose a cleaner future.

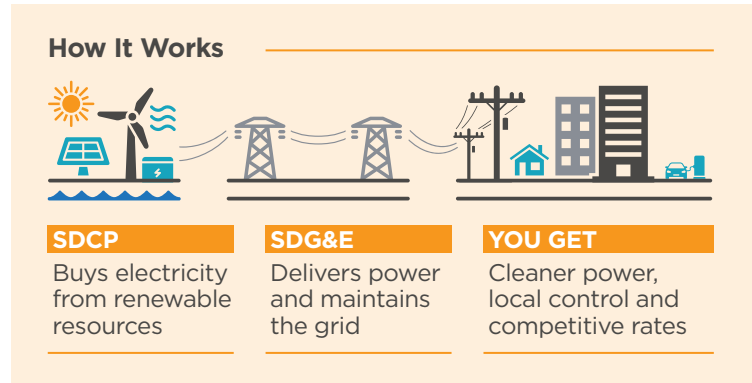
BENEFITS THAT YOU CAN EXPECT FROM SAN DIEGO COMMUNITY POWER:

- Competitively priced, cleaner, renewable power
- Energy programs tailored to meet the needs of San Diegans
- Local control by local representatives who prioritize people and our communities
- Reinvestment of revenues into the communities we serve
- Support of local job creation and development of local renewable energy projects

On behalf of everyone at SDCP, we are excited to serve your community with clean and renewable energy!

Sincerely,

Your local team at San Diego Community Power



To learn more about SDCP and our benefits, change your service level, or to opt out, please visit our website at www.SDCommunityPower.org or call us at 1-888-382-0169.

Para obtener más información sobre SDCP y nuestros beneficios, cambiar su nivel de servicio u optar por no participar, por favor visite www.SDCommunityPower.org o llame al 1-888-382-0169.

Upang matuto nang higit pa tungkol sa SDCP at sa aming mga benepisyo, baguhin ang antas ng iyong serbisyo, o mag-opt out, bisitahin ang www.SDCommunityPower.org o tumawag sa 1-888-382-0169.

**Please note that rooftop solar customers and other customers participating in Net Energy Metering (NEM) will be automatically enrolled at the end of their relevant period (commonly referred to as “true up”). For more information on enrollment, please see the FAQs on our website at SDCommunityPower.org/faq.*

TERMS & CONDITIONS OF SERVICE

San Diego Community Power electric generation rates are managed with the intention of providing cleaner electricity at competitive rates. Any changes to SDCP rates will be adopted at duly noticed public hearings of the San Diego Community Power Board of Directors. Changes to SDG&E or SDCP rates will impact cost comparisons between SDCP and SDG&E.

All SDG&E and SDCP customers pay a monthly Power Charge Indifference Adjustment (PCIA) and Franchise Fee Surcharge. SDCP has already accounted for these after-market charges in calculating rates. View SDCP rates and SDG&E cost comparisons on our website.

ENROLLMENT: SDCP is the default electricity service provider for the cities of Chula Vista, Encinitas, Imperial Beach, La Mesa, National City, San Diego, and the Unincorporated County of San Diego. You will be automatically enrolled in SDCP services unless you opt out at least five business days before your meter read date during the enrollment month. Accounts will be automatically enrolled in SDCP’s PowerOn on your regularly scheduled meter read on or after the first day of the enrollment month. You may choose to opt up to Power100, which provides 100% renewable energy service at a slight premium.

BILLING: You will receive a single monthly bill from SDG&E that includes SDCP’s electric generation charges. SDCP’s electric generation charge replaces SDG&E’s electric generation charge. SDCP’s charge is not a duplicate charge or extra fee. SDG&E will continue to charge you for electric delivery services. If you opt out of SDCP, SDG&E will resume charging you for electric generation.

For complete Terms and Conditions of Service, please visit SDCommunityPower.org or call SDCP at 1-888-382-0169.





SAN DIEGO COMMUNITY POWER

PO Box 12716
San Diego, CA 92112
SDCommunityPower.org

HELLO NEIGHBOR,

San Diego Community Power (SDCP)

is a local provider of electricity that will serve your community by bringing you cleaner energy at competitive rates. We put our communities first, helping you take a giant step toward a more sustainable energy future. We are a locally managed, not-for-profit, public agency that focuses on what families need and want most when it comes to their energy.

Following the completion of your Net Energy Metering (NEM) relevant period (commonly referred to as your “annual true up”), San Diego Community Power will become your new electric generation service provider – meaning we will purchase renewable power, like solar and wind, and provide it to you at competitive rates when you pull more from the grid than you generate.

YOUR ENERGY. YOUR CHOICE.

When you are automatically enrolled into our service, you'll receive our standard service offering, **PowerOn**, which provides at least 50% renewable energy and is priced competitively to what you are currently paying with San Diego Gas & Electric (SDG&E).

If you want to further reduce your carbon footprint from energy consumption, you can choose to upgrade to **Power100**, which provides 100% renewable energy for a small premium.

You will continue to get your bill from SDG&E, but now you can choose who provides your electricity. You'll be automatically enrolled in our service unless you choose to opt out and return to SDG&E service, but you'll be missing out on some important benefits. With SDCP, you're empowered to choose a cleaner future.

BENEFITS THAT YOU CAN EXPECT FROM SAN DIEGO COMMUNITY POWER:

- Competitively priced, cleaner, renewable power
- Energy programs tailored to meet the needs of San Diegans
- Local control by local representatives who prioritize people and our communities
- Reinvestment of revenues into the communities we serve
- Support of local job creation and development of local renewable energy projects

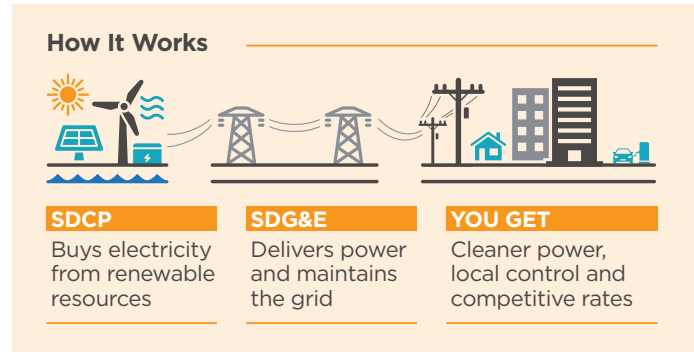
As a customer with onsite generation, you will be automatically enrolled into our Net Energy Metering (NEM) program that functions almost identically to that of SDG&E's but with a few key differences that make our program better!

- Same rate schedules and accrual of credits
- Monthly billing to reduce a single large annual true up bill
- Premium Net Surplus Compensation for customers that generate extra electricity every year
- Automatic checks to customers that have a compensation amount over \$100, up to \$2,500
- Carry over of compensation credits if less than \$100

On behalf of everyone at SDCP, we are excited to serve your community with clean and renewable energy!

Sincerely,

Your local team at San Diego Community Power



To learn more about SDCP and our benefits, change your service level, or to opt out, please visit our website at www.SDCommunityPower.org or call us at 1-888-382-0169.

Para obtener más información sobre SDCP y nuestros beneficios, cambiar su nivel de servicio u optar por no participar, por favor visite www.SDCommunityPower.org o llame al 1-888-382-0169.

Upang matuto nang higit pa tungkol sa SDCP at sa aming mga benepisyo, baguhin ang antas ng iyong serbisyo, o mag-opt out, bisitahin ang www.SDCommunityPower.org o tumawag sa 1-888-382-0169.

Please note that Net Energy Metering (NEM) accounts will automatically enroll at the time of their true up date. Non-NEM accounts will be enrolled in April 2023. For more information on enrollment, please see the FAQs on our website at SDCommunityPower.org/faq.

TERMS & CONDITIONS OF SERVICE

San Diego Community Power electric generation rates are managed with the intention of providing cleaner electricity at competitive rates. Any changes to SDCP rates will be adopted at duly noticed public hearings of the San Diego Community Power Board of Directors. Changes to SDG&E or SDCP rates will impact cost comparisons between SDCP and SDG&E.

All SDG&E and SDCP customers pay a monthly Power Charge Indifference Adjustment (PCIA) and Franchise Fee Surcharge. SDCP has already accounted for these after-market charges in calculating rates. View SDCP rates and SDG&E cost comparisons on our website.

ENROLLMENT: SDCP is the default electricity service provider for the cities of Chula Vista, Encinitas, Imperial Beach, La Mesa, National City, San Diego, and the Unincorporated County of San Diego. You will be automatically enrolled in SDCP services unless you opt out at least five business days before your meter read date during the enrollment month. Accounts will be automatically enrolled in SDCP's PowerOn on your regularly scheduled meter read on or after the first day of the enrollment month. You may choose to opt up to Power100, which provides 100% renewable energy service at a slight premium.

BILLING: You will receive a single monthly bill from SDG&E that includes SDCP's electric generation charges. SDCP's electric generation charge replaces SDG&E's electric generation charge. SDCP's charge is not a duplicate charge or extra fee. SDG&E will continue to charge you for electric delivery services. If you opt out of SDCP, SDG&E will resume charging you for electric generation.

For complete Terms and Conditions of Service, please visit SDCommunityPower.org or call SDCP at 1-888-382-0169.

